

Xuzhou **RITMAN** Equipment Co., Ltd. is an intelligent equipment company (Short name "RITMAN Intelligent", English name "RITMAN"). RITMAN with the mission of "intelligent, digital, and trouble-free production", the company is a national high-tech enterprise and National-Level SRDI "Little Giant" Enterprise. Relying on strong R&D and production strength, the company focuses on the sales and service of laser cutting equipment. The main products include: laser plate cutting machine, laser tube cutting machine, large format customized laser cutting machine, laser plate & tube integrated machine, sheet coil laser cutting machine, 3D laser cutting machine, handheld laser welding machine, automated laser welding equipment, robot laser welding machine and other equipment. We are willing to work with our partners for mutual benefit and win-win situation!

徐州瑞马智能技术股份有限公司是一家智能装备企业（简称“瑞马智能”，英文名“RITMAN”）。公司以“工业生产智能化、数字化、无忧化”为使命，是国家级高新技术企业、国家级专精特新“小巨人”企业。公司依托强大的研发生产实力，专注于激光切割设备以及上下游设备的销售与服务。主要产品包括：激光切板机、激光切管机、大幅面定制型激光切割机、激光板管一体机、卷材激光切割机、三维激光切割机、手持激光焊机、自动化激光焊接设备、机器人激光焊接机等设备。愿与广大合作伙伴互利互惠，共创共赢！



NO:2024.04



认真 · 开放 · 勇气 · 责任
Seriousness Openness Courage Responsibility



RITMAN Laser has more than 100 R&D engineers. It has a technical R&D team composed of a doctoral team from Dalian University of Technology and a master's team from Southeast University, as well as perfect research laboratory facilities and equipment. RITMAN with strong R&D technical strength, the R&D Technology Center has obtained a total of 64 invention patents, 10 authorizations, 59 utility models, 28 soft publications, and 12 professional papers.

瑞马激光拥有研发技术工程师100余名，同时拥有包括大连理工大学博士生团队和东南大学硕士生团队组成的技术研发团队以及完善的科研实验设施设备。自公司成立以来，凭借强劲的研发技术实力加持，研发技术中心累计获得发明专利实审64项、授权10项，实用新型59项、软著28项、发表专业论文12篇。



100+ Technical Team
技术团队
Ph.D. 博士
Specialist 专家
Senior Engineer 高级工程师

200+
Invention patent 专利

Xuzhou RITMAN Equipment Co.,LTD

☎ 400-006-3106
✉ James@sinatoritman.com
🌐 www.ritman-laser.com
📍 Chuangye Road 35# Xuzhou Economic Development Zone, Jiangsu, China

徐州瑞马智能技术股份有限公司

☎ 0516-83059893
🌐 http://www.ritmanlaser.com
📍 江苏徐州经济开发区创业路35号

6000-120000W

RM-LC GF Series

Large-format Sheet Laser Cutting Machine
大幅面地轨板材激光切割机

Large-format Sheet Laser Cutting Machine

大幅面地轨板材激光切割机

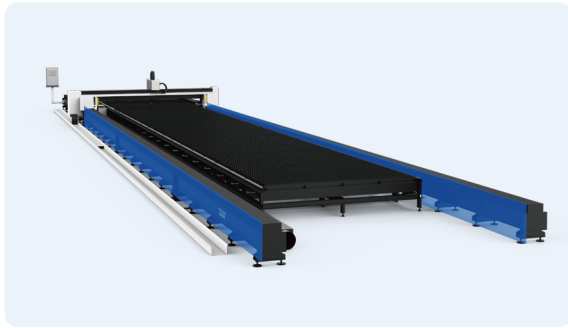


RM-LC GF				
Model 机型	RM-LC GF24030	RM-LC GF24035	RM-LC GF24040	RM-LC GF26031
Power 功率	6000W-120000W	6000W-120000W	6000W-120000W	6000W-120000W
Processing format 加工幅面	24000mmx3000mm	24000mmx3500mm	24000mmx4000mm	26000mmx3100mm
Acceleration 加速度	0.8G	0.8G	0.8G	0.8G
Max. No-load Speed 最大空载速度	60m/min	60m/min	60m/min	60m/min
Positioning Accuracy 定位精度	±0.05mm	±0.05mm	±0.05mm	±0.05mm
Repositioning Accuracy 重复定位精度	±0.03mm	±0.03mm	±0.03mm	±0.03mm

Can customize any size based on standard machines
可根据标准机型为基础定制任意尺寸

Product Advantages

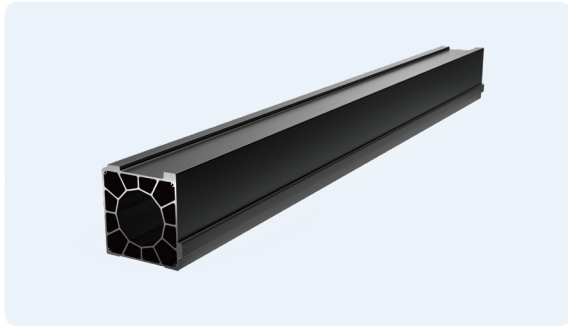
产品优势



High Strength Mortise And Tenon Welded Bed Body

高强度卯榫焊接床身

The track is welded with H-shaped steel and steel plates. Standard unit sections: 8m and 6m beams, with unit section lengths selected according to customer requirements.
轨道采用H型钢+钢板焊接。标准单元节：8m和6m梁总，根据客户需求选配单元节长度。



Steel Crossbeam

钢制横梁

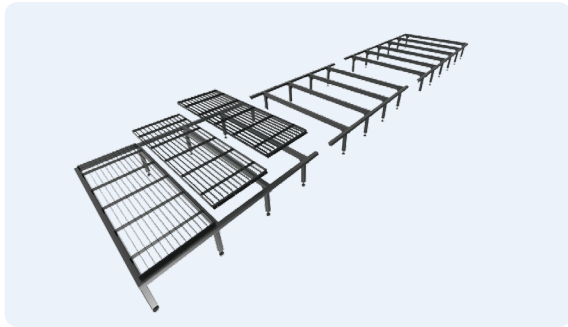
Steel crossbeams are made by splicing and welding steel plates. Steel crossbeams have high rigidity, and their accuracy can be stable for a long time. More suitable for large-span ground rail laser cutting machines.
钢质横梁，由钢板拼接拼焊而成，钢质横梁具有较高的刚性，横梁的精度能够长期稳定。更适用于大跨距的地轨式激光切割机。



Precision Module Transmission

精密模组

The integrated Z-axis main body is welded with aluminum alloy plate, matched with precision screw module transmission, with high accuracy and fast speed.
采用铝合金板焊一体式Z轴主体，搭配精密丝杠模组传动，精度高，速度快。



Modular Workbench

模块化工作台

Modular workbench, can be quickly replaced, assembled at will, has high load-bearing capacity, is not affected by the bed, and has high cutting accuracy.
模块化工作台，可快速更换，随意组装，承重高，不受床身影响，切割精度高。

CUTTING SAMPLES

切割样品



APPLICATION FIELDS

应用领域

