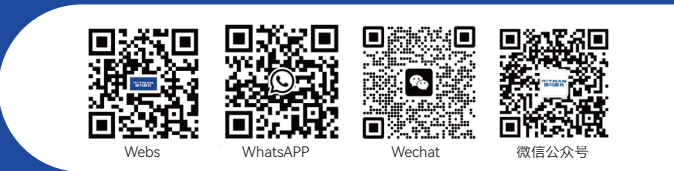




Xuzhou **RITMAN** Equipment Co., Ltd. is an intelligent equipment company (Short name "RITMAN Intelligent", English name "RITMAN"). RITMAN with the mission of "intelligent, digital, and trouble-free production", the company is a national high-tech enterprise and National-Level SRDI "Little Giant" Enterprise. Relying on strong R&D and production strength, the company focuses on the sales and service of laser cutting equipment. The main products include: laser plate cutting machine, laser tube cutting machine, large format customized laser cutting machine, laser plate & tube integrated machine, sheet coil laser cutting machine, 3D laser cutting machine, handheld laser welding machine, automated laser welding equipment, robot laser welding machine and other equipment. We are willing to work with our partners for mutual benefit and win-win situation!

徐州瑞马智能技术股份有限公司是一家智能装备企业（简称“瑞马智能”，英文名“RITMAN”）。公司以“工业生产智能化、数字化、无忧化”为使命，是国家级高新技术企业、国家级专精特新“小巨人”企业。公司依托强大的研发生产实力，专注于激光切割设备以及上下游设备的销售与服务。主要产品包括：激光切板机、激光切管机、大幅面定制型激光切割机、激光板管一体机、卷材激光切割机、三维激光切割机、手持激光焊接机、自动化激光焊接设备、机器人激光焊接机等设备。愿与广大合作伙伴互利互惠，共创共赢！

NO:2024.04



认真 · 开放 · 勇气 · 责任
Earnest Openness Courage Responsibility



RITMAN Laser has more than 100 R&D engineers. It has a technical R&D team composed of a doctoral team from Dalian University of Technology and a master's team from Southeast University, as well as perfect research laboratory facilities and equipment. RITMAN with strong R&D technical strength, the R&D Technology Center has obtained a total of 64 invention patents, 10 authorizations, 59 utility models, 28 soft publications, and 12 professional papers.

瑞马激光拥有研发技术工程师100余名，同时拥有包括大连理工大学博士生团队和东南大学硕士生团队组成的技术研发团队以及完善的科研实验设施设备。自公司成立以来，凭借强劲的研发技术实力加持，研发技术中心累计获得发明专利实审64项、授权10项，实用新型59项、软著28项、发表专业论文12篇。



100+ Technical Team
技术团队
Ph.D. 博士 Specialist 专家 Senior Engineer 高级工程师

200+
Invention patent 专利

Xuzhou RITMAN Equipment Co.,LTD

- ☎ 400-006-3106
- ✉ James@sinatoritman.com
- 🌐 www.ritman-laser.com
- 📍 Chuangye Road 35# Xuzhou Economic Development Zone, Jiangsu, China

徐州瑞马智能技术股份有限公司

- ☎ 0516-83059893
- 🌐 http://www.ritmanlaser.com
- 📍 江苏徐州经济开发区创业路35号

3000-6000W

RM-LC **TD** Series

2 Chuck Laser Pipe Cutting Machine
2卡盘激光切管机

2 Chuck Laser Pipe Cutting Machine

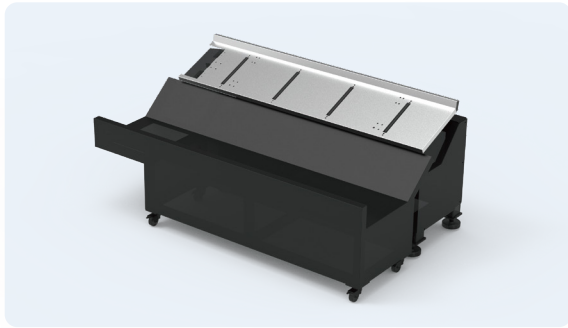
2卡盘激光切管机



RM-LC TD						
Model 机型	RM-LC TD7013	RM-LC TD7016	RM-LC TD7024	RM-LC TD7036	RM-LC TD9024	RM-LC TD12024
Power 功率	3000W-6000W	3000W-6000W	3000W-6000W	3000W-6000W	3000W-6000W	3000W-6000W
Pipe size range 加工管径	∅/□: 10-130mm	∅/□: 10-160mm	∅/□: 10-240mm	∅/□: 20-360mm	∅/□: 10-240mm	∅/□: 10-240mm
The maximum length of machinable pipes 可加工管的最大长度	7000mm	7000mm	7000mm	7000mm	9000mm	12000mm
Shortest remaining material 最短废料	100mm	100mm	100mm	100mm	100mm	100mm
Maximum weight of pipes 管材的最大重量	150kg	150kg	300kg	800kg	300kg	300kg
Positioning accuracy 定位精度	±0.05mm	±0.05mm	±0.05mm	±0.05mm	±0.05mm	±0.05mm
Repetitive positioning accuracy 重复定位精度	±0.03mm	±0.03mm	±0.03mm	±0.03mm	±0.03mm	±0.03mm

Product Advantages

产品优势



Receiving Machine

接料机

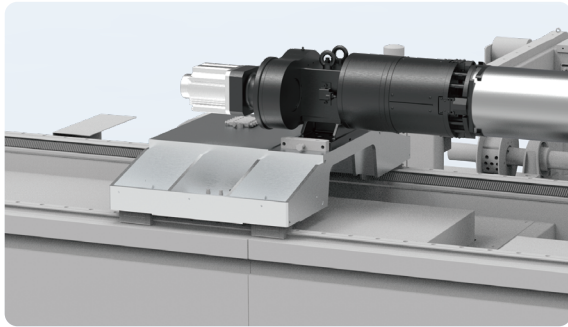
There are three different types available: servo driven feeding machines for square pipes, rectangular pipes, profiles, and complex cross-section pipes; Variable diameter wheel inclined surface material receiving frame is used for round and square pipes; A simple inclined material receiving frame is used for shorter and lighter round and square pipes.
可选配3种不同类型：伺服随动接料机用于方管、矩形管、型材及复杂截面管材；变径轮斜面接料架用于圆管和方管；简易斜面接料架用于较短、重量轻的圆管及方管。



Fully Self-developed Mes System

全自研MES系统

The equipment is equipped with a fully self-developed MES system, lean production, job scheduling, production process monitoring, quality management and other functions, effectively improving order response speed and production efficiency.
设备搭载全自研MES系统，精益生产，作业计划安排、生产过程监控、质量管理等功能，有效提升订单响应速度和生产效率和生产效率的同时还能减少人工，降低运营成本。



Lightweight And Sturdy Card Holder

高承载尾卡座

The tail card holder is designed with a high load-bearing box, which is lightweight and has good rigidity.
尾卡座高承载性箱式设计,重量轻、刚性好。



Fully Automatic Loading And Unloading Device

全自动上下料

Optional semi-automatic/fully automatic loading and unloading devices can improve work safety, reduce the risk of injury, and reduce the workload of workers.
可选配半自动/全自动上下料装置，提高工作安全性，降低受伤危险，减轻工作人员工作,提高工作效率。

CUTTING SAMPLES

切割样品



APPLICATION FIELDS

应用领域

